

Market Report for the Week of March 18, 2019

Daily Averages

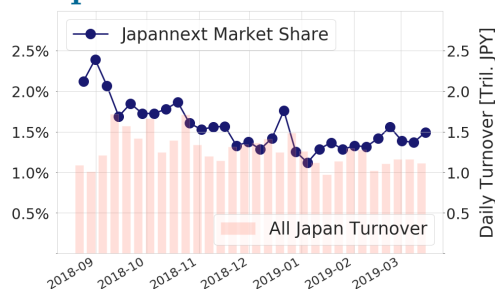
| Universe | Value (JPY) | Volume | Share | PI (bps) | Symbols |
|------------------|----------------|------------|--------|----------|---------|
| All Market | 92,196,649,427 | 76,038,380 | 3.51 % | 4.19 | 2844 |
| Large Cap | 16,650,881,020 | 7,092,675 | 1.49 % | 1.20 | 101 |
| Mid Cap | 49,222,126,325 | 33,004,400 | 5.87 % | 3.75 | 400 |
| Small Cap | 14,197,323,328 | 21,486,450 | 4.49 % | 7.27 | 1687 |
| Mothers & Jasdaq | 6,188,029,012 | 13,535,400 | 3.28 % | 13.72 | 558 |
| ETFs & REITs | 5,938,289,742 | 919,456 | 3.61 % | 2.45 | 98 |

All Market
3.5 %
Topix 100

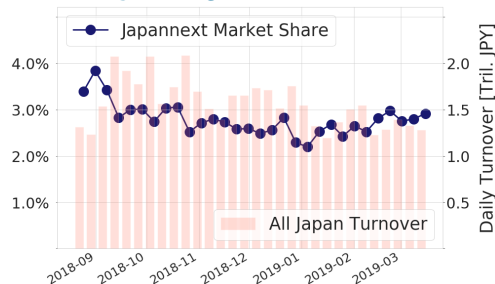
1.5 %
Nikkei 225

2.9 %

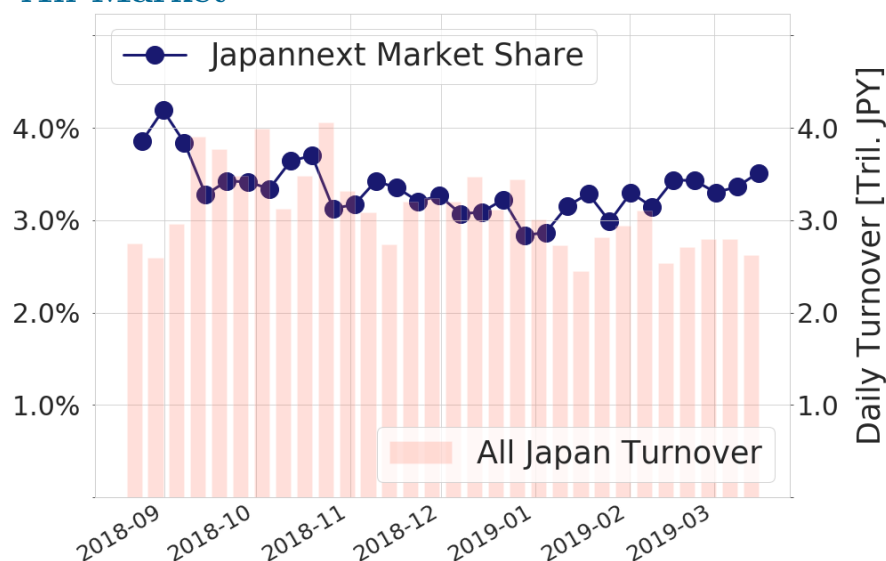
Topix 100



Nikkei 225



All Market



Top Stocks by Turnover

| Stock | Value (JPY) | Share | PI (bps) |
|---------------|---------------|--------|----------|
| 6645 OMRON | 6,146,742,800 | 11.77% | 6.43 |
| 9984 SOFTBANK | 5,193,028,900 | 1.79% | 1.16 |
| 6506 YASKAWA | 4,136,226,550 | 7.84% | 4.28 |
| 1570 NIKKEI | 4,101,529,157 | 1.34% | 1.20 |
| 4755 RAKUTEN | 3,884,647,290 | 4.86% | 2.45 |

Top Stocks by Market Share

| Stock | Value (JPY) | Share | PI (bps) |
|--------------|-------------|--------|----------|
| 6773 PIONEER | 639,341,810 | 38.58% | 79.16 |
| 6472 NTN | 903,846,520 | 17.85% | 9.13 |
| 4582 SYMBIO | 339,227,670 | 17.12% | 12.74 |
| 7004 HIT-ZOS | 353,004,410 | 16.72% | 9.31 |
| 8985 JHR | 784,048,840 | 15.74% | 3.35 |

Top Stocks by Price Improvement

| Stock | Value (JPY) | Share | PI (bps) |
|---------------|-------------|--------|----------|
| 6773 PIONEER | 639,341,810 | 38.58% | 79.16 |
| 6740 JDI | 343,490,160 | 12.78% | 47.07 |
| 9263 VISIONAR | 122,351,790 | 13.77% | 44.68 |
| 2134 SUNCAPTL | 132,009,160 | 12.29% | 40.58 |
| 8704 TRADERS | 126,238,900 | 9.38% | 39.49 |

Top Stocks by Savings

| Stock | Value (JPY) | Share | Savings |
|--------------|---------------|--------|-----------|
| 6773 PIONEER | 639,341,810 | 38.58% | 4,901,750 |
| 6645 OMRON | 6,146,742,800 | 11.77% | 3,257,100 |
| 4689 YAHOO J | 2,745,706,960 | 13.77% | 2,986,000 |
| 2768 SOJITZ | 2,049,215,010 | 10.87% | 1,459,080 |
| 6506 YASKAWA | 4,136,226,550 | 7.84% | 1,422,600 |

- ▶ Analysis is based on SBI Japannext and Thomson Reuters data. Large Cap = TPX100, Mid Cap = TPX500 excl. TPX100, Small Cap = Section1 + Section2 excl. TPX500.
- ▶ All Japan Turnover = Japannext (J+X+U+N) + TSE (excl. Tostnet) + Chi-X (excl. Chi-Match, Chi-Select). Market Share = Japannext turnover / All Japan Turnover.
- ▶ Price Improvement (PI) and Savings (PI*volume) are calculated by comparing the execution price against the primary market's best bid for each sell or best offer for each buy at the point of execution from the taker's perspective. Reported PI is a value-weighted average. Names with weekly traded value less than 100,000,000 JPY are excluded from the rankings tables.

Top Stocks by Universe

Topix 100

| Stock | Value (JPY) | Share | PI (bps) |
|--------------|---------------|-------|----------|
| 8411 MIZUHO | 978,598,500 | 1.26% | 5.74 |
| 6273 SMC | 1,155,466,500 | 2.24% | 1.88 |
| 6098 RECRUIT | 757,802,050 | 2.14% | 1.86 |
| 8058 MITBISI | 903,284,300 | 2.21% | 1.71 |
| 9201 JAL | 850,667,750 | 2.28% | 1.53 |
| 9020 JR EAST | 837,420,200 | 2.81% | 1.31 |
| 6501 HITACHI | 931,173,600 | 1.43% | 1.74 |
| 7974 NINTEND | 2,961,046,500 | 1.02% | 1.85 |
| 8306 MUFG | 1,092,390,210 | 1.13% | 1.75 |
| 6861 KEYENCE | 1,423,117,000 | 0.91% | 1.83 |

Topix Mid400

| Stock | Value (JPY) | Share | PI (bps) |
|---------------|---------------|--------|----------|
| 4689 YAHOO J | 2,745,706,960 | 13.77% | 12.63 |
| 6472 NTN | 903,846,520 | 17.85% | 9.13 |
| 7167 MEBUKIFG | 686,973,330 | 13.83% | 11.21 |
| 8410 SEVEN BK | 777,146,410 | 13.81% | 10.05 |
| 8848 LEOPC21 | 809,506,650 | 9.84% | 10.67 |
| 5803 FUJIKRA | 704,963,380 | 13.65% | 7.28 |
| 7186 CONCRDIA | 822,851,970 | 12.86% | 7.08 |
| 2768 SOJITZ | 2,049,215,010 | 10.87% | 8.35 |
| 6645 OMRON | 6,146,742,800 | 11.77% | 6.43 |
| 4005 SMICHEM | 1,656,980,410 | 11.49% | 6.17 |

Small

| Stock | Value (JPY) | Share | PI (bps) |
|---------------|-------------|--------|----------|
| 6740 JDI | 343,490,160 | 12.78% | 47.07 |
| 8585 OR.CORP | 229,147,810 | 15.3% | 27.26 |
| 2353 NP-PARK | 215,693,690 | 15.18% | 17.74 |
| 7004 HIT-ZOS | 353,004,410 | 16.72% | 9.31 |
| 3315 NIP-COKE | 133,344,940 | 10.3% | 27.59 |
| 5912 OSJBHD | 150,362,780 | 11.92% | 9.75 |
| 5480 NP-YAKN | 228,283,210 | 11.76% | 9.71 |
| 6632 JVCKW | 174,356,360 | 10.75% | 10.91 |
| 8703 KABU.COM | 387,388,380 | 11.87% | 8.63 |
| 8698 MONEX G | 626,853,780 | 13.04% | 6.91 |

Mothers

| Stock | Value (JPY) | Share | PI (bps) |
|---------------|---------------|-------|----------|
| 8789 FINTECH | 917,850,990 | 6.98% | 16.09 |
| 4597 SOLASIA | 315,790,140 | 8.6% | 12.03 |
| 3930 HATENA | 150,631,850 | 5.51% | 12.82 |
| 4393 BOI | 138,815,730 | 6.38% | 11.01 |
| 3995 SKIYAKI | 335,898,750 | 5.19% | 11.70 |
| 2160 GNI | 133,019,400 | 8.67% | 6.49 |
| 4571 NANOCARI | 282,620,580 | 5.81% | 8.29 |
| 6046 LINKBAL | 180,354,160 | 4.06% | 10.45 |
| 6182 ROZETTA | 189,230,500 | 5.08% | 7.76 |
| 4588 ONCOLYS | 1,872,135,550 | 3.41% | 10.76 |

JASDAQ

| Stock | Value (JPY) | Share | PI (bps) |
|---------------|-------------|--------|----------|
| 7638 NEW ART | 89,787,550 | 26.69% | 139.37 |
| 2315 CAICA | 88,993,970 | 10.6% | 134.73 |
| 9263 VISIONAR | 122,351,790 | 13.77% | 44.68 |
| 3777 GEONEXT | 59,853,330 | 10.75% | 47.04 |
| 2134 SUNCAPTL | 132,009,160 | 12.29% | 40.58 |
| 6628 ONKYO | 34,468,990 | 10.51% | 43.32 |
| 8704 TRADERS | 126,238,900 | 9.38% | 39.49 |
| 7610 TAY TWO | 45,019,190 | 8.57% | 42.73 |
| 9973 KOZOSUSI | 127,871,130 | 7.93% | 35.35 |
| 4582 SYMBIO | 339,227,670 | 17.12% | 12.74 |

Second Section

| Stock | Value (JPY) | Share | PI (bps) |
|---------------|-------------|--------|----------|
| 3528 PROSPECT | 39,077,700 | 30.16% | 256.50 |
| 8925 ARDEPRO | 20,652,950 | 15.89% | 87.18 |
| 6731 PIXELA | 23,743,920 | 14.25% | 24.17 |
| 6835 ALLIEDHD | 24,312,330 | 12.97% | 25.42 |
| 5955 YAMASNA | 17,094,030 | 8.38% | 29.83 |
| 8105 MARUSHO | 17,071,580 | 5.75% | 25.32 |
| 3071 STREAM | 52,252,850 | 7.76% | 17.22 |
| 9980 MRK HLD | 24,832,190 | 10.47% | 10.35 |
| 8226 RIKEI | 183,114,660 | 6.14% | 15.08 |
| 2397 DNACHIP | 32,308,010 | 4.96% | 17.94 |

ETFs & REITs

| Stock | Value (JPY) | Share | PI (bps) |
|---------------|---------------|--------|----------|
| 8963 INV | 1,034,138,570 | 14.75% | 5.83 |
| 8985 JHR | 784,048,840 | 15.74% | 3.35 |
| 8952 JRE | 1,471,295,300 | 9.47% | 3.81 |
| 8951 NBF | 1,817,920,600 | 10.46% | 3.06 |
| 3226 ACCOMMO | 248,590,100 | 6.77% | 4.39 |
| 3281 GLP | 838,261,790 | 13.35% | 2.21 |
| 8986 J RENTAL | 253,267,270 | 10.11% | 2.83 |
| 3269 ADR | 303,844,900 | 7.79% | 3.64 |
| 3309 SEKSUIHR | 262,273,990 | 9.48% | 2.85 |
| 3279 API | 456,531,850 | 10.4% | 2.43 |

- ▶ Best stocks are selected based on a combined score of turnover, market share and price improvement, and are listed here in order to illustrate a sample of stocks that trading on JNX venues can deliver benefits to our clients.
- ▶ The weights used in choosing the best stocks depend on the universe.