

# Market Report for the Week of July 01, 2019

## Daily Averages

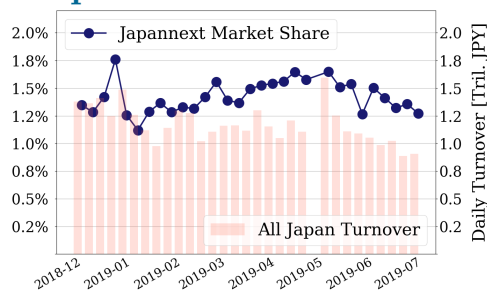
Universe	Value (JPY)	Volume	Share	PI (bps)	Symbols
All Market	67,203,718,545	64,327,078	2.99 %	4.35	2910
Large Cap	11,487,947,908	4,840,360	1.27 %	1.17	101
Mid Cap	33,191,449,666	22,502,040	4.76 %	3.67	399
Small Cap	12,354,687,418	22,455,040	3.92 %	7.21	1686
Mothers & Jasdaq	4,758,561,046	13,378,700	3.33 %	14.54	617
ETFs & REITs	5,411,072,507	1,150,938	2.94 %	2.05	107

All Market  
**3.0 %**  
Topix 100

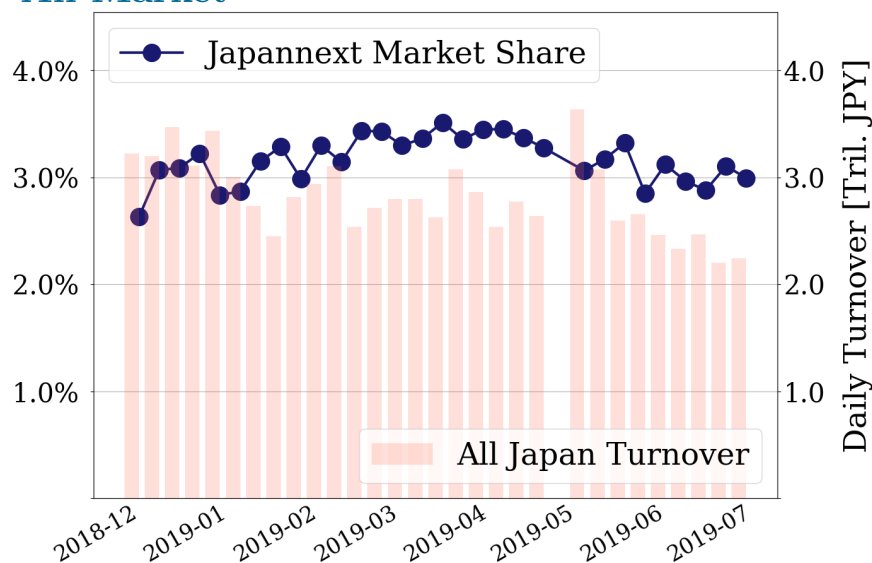
**1.3 %**  
Nikkei 225

**2.4 %**

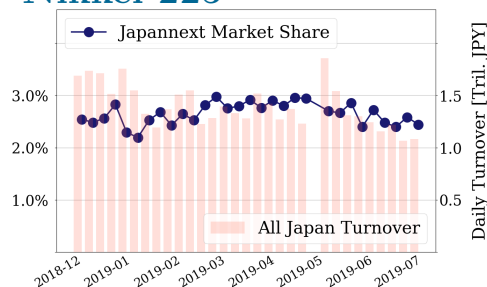
### Topix 100



### All Market



### Nikkei 225



## Top Stocks by Turnover

Stock	Value (JPY)	Share	PI (bps)
1570 NIKKEILV	6,159,832,631	1.40%	1.28
1357 NKDOUBLE	4,828,679,322	5.99%	1.99
4755 RAKUTEN	3,760,745,410	4.92%	2.12
6506 YASKAWA	3,555,119,200	5.34%	4.12
6762 TDK	3,319,379,600	5.46%	3.16

## Top Stocks by Market Share

Stock	Value (JPY)	Share	PI (bps)
9973 KOZOSUSI	107,431,680	19.56%	78.93
7638 NEW ART	111,885,700	17.34%	77.58
8714 SENSUIK	123,345,750	16.00%	17.51
9263 VISIONAR	371,259,750	15.56%	83.89
6472 NTN	971,732,440	14.72%	10.14

## Top Stocks by Price Improvement

Stock	Value (JPY)	Share	PI (bps)
3250 ADWORKS	178,810,830	14.63%	106.83
9263 VISIONAR	371,259,750	15.56%	83.89
9973 KOZOSUSI	107,431,680	19.56%	78.93
7638 NEW ART	111,885,700	17.34%	77.58
6740 JDI	1,331,154,620	9.99%	40.50

## Top Stocks by Savings

Stock	Value (JPY)	Share	Savings
6628 ONKYO	1,824,382,620	10.42%	3,993,880
6740 JDI	1,331,154,620	9.99%	3,593,560
9263 VISIONAR	371,259,750	15.56%	2,398,720
4689 YAHOO J	2,705,841,960	11.23%	1,884,370
3250 ADWORKS	178,810,830	14.63%	1,301,270

- ▶ Analysis is based on SBI Japannext and Thomson Reuters data. Large Cap = TPX100, Mid Cap = TPX500 excl. TPX100, Small Cap = Section1 + Section2 excl. TPX500.
- ▶ All Japan Turnover = Japannext (J+X+U+N) + TSE (excl. Tostnet) + Chi-X (excl. Chi-Match, Chi-Select). Market Share = Japannext turnover / All Japan Turnover.
- ▶ Price Improvement (PI) and Savings (PI\*volume) are calculated by comparing the execution price against the primary market's best bid for each sell or best offer for each buy at the point of execution from the taker's perspective. Reported PI is a value-weighted average. Names with weekly traded value less than 100,000,000 JPY are excluded from the rankings tables.

# Top Stocks by Universe

## Topix 100

Stock	Value (JPY)	Share	PI (bps)
8411 MIZUHO	839,825,220	1.6%	6.35
7751 CANON	734,743,570	2.16%	1.70
6861 KEYENCE	914,203,000	1.02%	2.28
9432 NTT	880,958,940	1.12%	1.97
4063 SINETUC	1,381,534,400	2.47%	1.33
3382 7&I-HD	760,907,050	1.43%	1.62
9984 SOFTBNKG	2,032,101,220	0.89%	1.96
6981 MURATA	1,598,498,600	1.19%	1.69
9020 JR EAST	773,013,700	2.07%	1.27
8316 SMFG	1,212,422,950	1.73%	1.36

## Topix Mid400

Stock	Value (JPY)	Share	PI (bps)
5703 NLM HD	522,661,800	11.92%	13.99
7167 MEBUKIFG	605,151,400	14.65%	10.64
6472 NTN	971,732,440	14.72%	10.14
8410 SEVEN BK	551,102,910	11.93%	11.08
2768 SOJITZ	1,326,613,880	13.13%	10.01
4689 YAHOO J	2,705,841,960	11.23%	9.58
7186 CONCRDIA	812,867,340	11.59%	8.07
9831 YAMDADK	1,332,536,310	12.95%	6.52
5803 FUJIKRA	530,674,560	11.34%	7.15
8358 SURGABK	881,882,580	10.32%	6.99

## Small

Stock	Value (JPY)	Share	PI (bps)
3250 ADWORKS	178,810,830	14.63%	106.83
8585 OR.CORP	333,574,140	12.6%	30.70
8714 SENSUIK	123,345,750	16.0%	17.51
6740 JDI	1,331,154,620	9.99%	40.50
7238 AKEBONO	113,937,030	12.72%	22.52
5563 NP-DENK	98,203,850	12.51%	14.88
6632 JVCKW	276,051,440	13.66%	11.99
5480 NP-YAKN	241,191,630	11.28%	13.09
5912 OSJBHD	112,284,950	12.32%	9.09
2353 NP-PARK	202,363,920	10.05%	14.13

## Mothers

Stock	Value (JPY)	Share	PI (bps)
4597 SOLASIA	238,418,240	8.62%	11.61
4571 NANOCARI	261,847,290	8.35%	7.70
4596 KUBOTAPH	221,169,150	7.03%	8.32
3624 AXELMARK	390,194,000	2.85%	15.47
3914 JIG-SAW	341,683,100	3.58%	12.25
3692 FFRI	140,325,250	3.93%	10.24
4586 MEDRX	154,602,480	3.25%	10.74
6182 ROZETTA	347,607,150	4.33%	7.48
3989 SHARINGT	274,085,290	4.15%	7.75
3906 ALBERT	131,236,200	4.13%	7.25

## JASDAQ

Stock	Value (JPY)	Share	PI (bps)
9973 KOZOSUSI	107,431,680	19.56%	78.93
7638 NEW ART	111,885,700	17.34%	77.58
9263 VISIONAR	371,259,750	15.56%	83.89
2315 CAICA	38,873,140	8.08%	137.45
2134 SUNCAPTL	32,832,570	14.17%	48.80
8704 TRADERS	31,882,860	12.15%	35.65
6628 ONKYO	1,824,382,620	10.42%	37.34
4712 KEYH	42,802,910	10.85%	20.60
7612 NUTS	95,378,250	12.17%	15.32
3323 RECOMM	134,992,870	11.1%	14.89

## Second Section

Stock	Value (JPY)	Share	PI (bps)
9318 ASIADAVE	38,292,580	15.69%	692.42
8894 HRKOSAN	18,136,430	15.67%	362.73
3528 PROSPECT	23,754,780	19.0%	252.50
8925 ARDEPRO	15,613,110	26.6%	99.15
6731 PIXELA	27,391,370	13.78%	45.19
6993 DAIKOKYA	16,125,770	6.68%	90.16
6835 ALLIEDHD	26,593,050	11.89%	29.80
8105 MARUSHO	13,752,000	8.57%	30.31
9980 MRK HLD	15,018,030	8.99%	13.37
3113 OAK	21,661,610	7.99%	13.82

## ETFs & REITs

Stock	Value (JPY)	Share	PI (bps)
8963 INV	1,180,646,270	8.24%	4.34
3476 R MIRAI	205,421,150	7.4%	4.50
8985 JHR	741,498,570	7.92%	2.90
3226 ACCOMMO	261,214,700	5.67%	3.90
8952 JRE	564,141,900	5.37%	3.64
3269 ADR	404,896,500	6.4%	2.95
3296 NP REIT	189,370,050	5.31%	3.54
1459 RK 225DI	312,735,125	4.98%	3.08
8951 NBF	625,927,900	4.53%	3.36
3309 SEKSUIHR	399,774,130	6.13%	2.43

- ▶ Best stocks are selected based on a combined score of turnover, market share and price improvement, and are listed here in order to illustrate a sample of stocks that trading on JNX venues can deliver benefits to our clients.
- ▶ The weights used in choosing the best stocks depend on the universe.